

# Wren ★ Feathers

## Summer Sew-Along 2013

### Part 5: Embroidered top or boho dress



As always this pattern is © by me (Jennie Bagrowski) and is for your personal use only, you MAY share it by linking to this blog, you may NOT sell it. If you sell things made from this pattern I'd appreciate credit for the pattern design. ☺

I assume you have basic sewing knowledge and the pictures should suffice, but if you need help please email me! jenwrenne at yahoo dot com

Proud of your project? Post your pix to our flickr group – go to the site and click “join this group”  
Want to see what others are making? <http://www.flickr.com/groups/summersewalong/>

This is one of my favorites in the summer collection! The embroidery adds an extra-special touch. I digitized my design using motifs from one of my fabrics, but you could just as easily use iron-on appliqués or work a bunch of lazy daisies by hand.

Make it:

- Short for a top
- Tunic length for a beach cover up
- Tunic length to blouse over capris
- A longer dress
- Heirloom-style in batiste with hand-embroidered flowers and maybe tatted/crocheted edging

Note that the neck facing/drawstring option is for intermediate sewers. If you are a beginner, or want your project to be quicker and easier, you will want to use the elastic option instead.

### Elastic option:



Hem sleeves and sew to fronts and backs (marked F and B on sleeve) so it looks like the pic above. Cut bias/use bias tape to make a casing on the back and insert elastic. Draw up to fit doll, sew final sleeve seam, then sew side seams and hem bottom.

### Drawstring option



Cut the back in 2 pieces. Hem and then sew sleeves to front and backs. Sew the facing to the neckline, making a slit either on the marked pattern lines (keyhole opening) or following the lines of your embroidery. Clip, turn, press. Topstitch a narrow  $\frac{1}{4}$ " casing along the top. Use a seam ripper to cut 1-2 stitches where shown in pic. Use fray check if you're concerned about fraying here (I didn't and mine was fine)





Use a tapestry needle to push thin yarn/ribbon/crochet cotton in from center front to back. Repeat on other side.

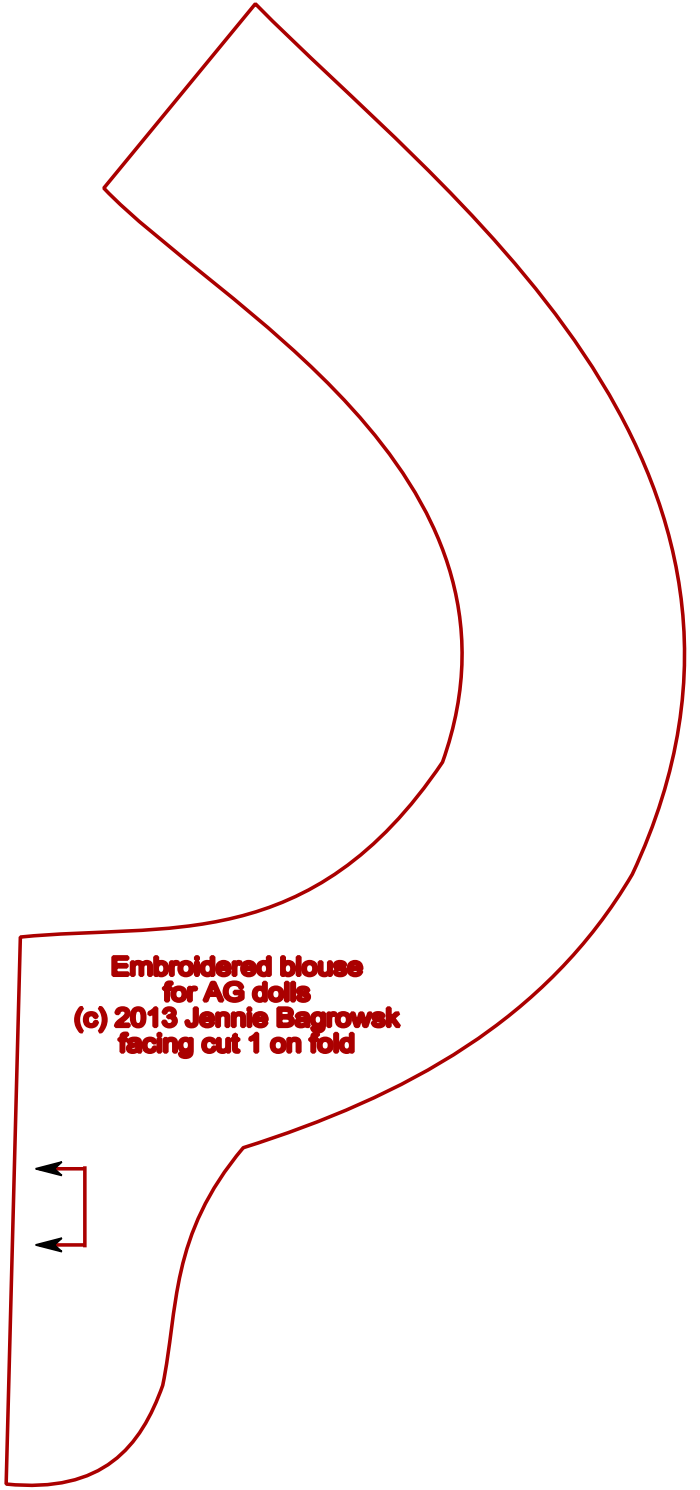


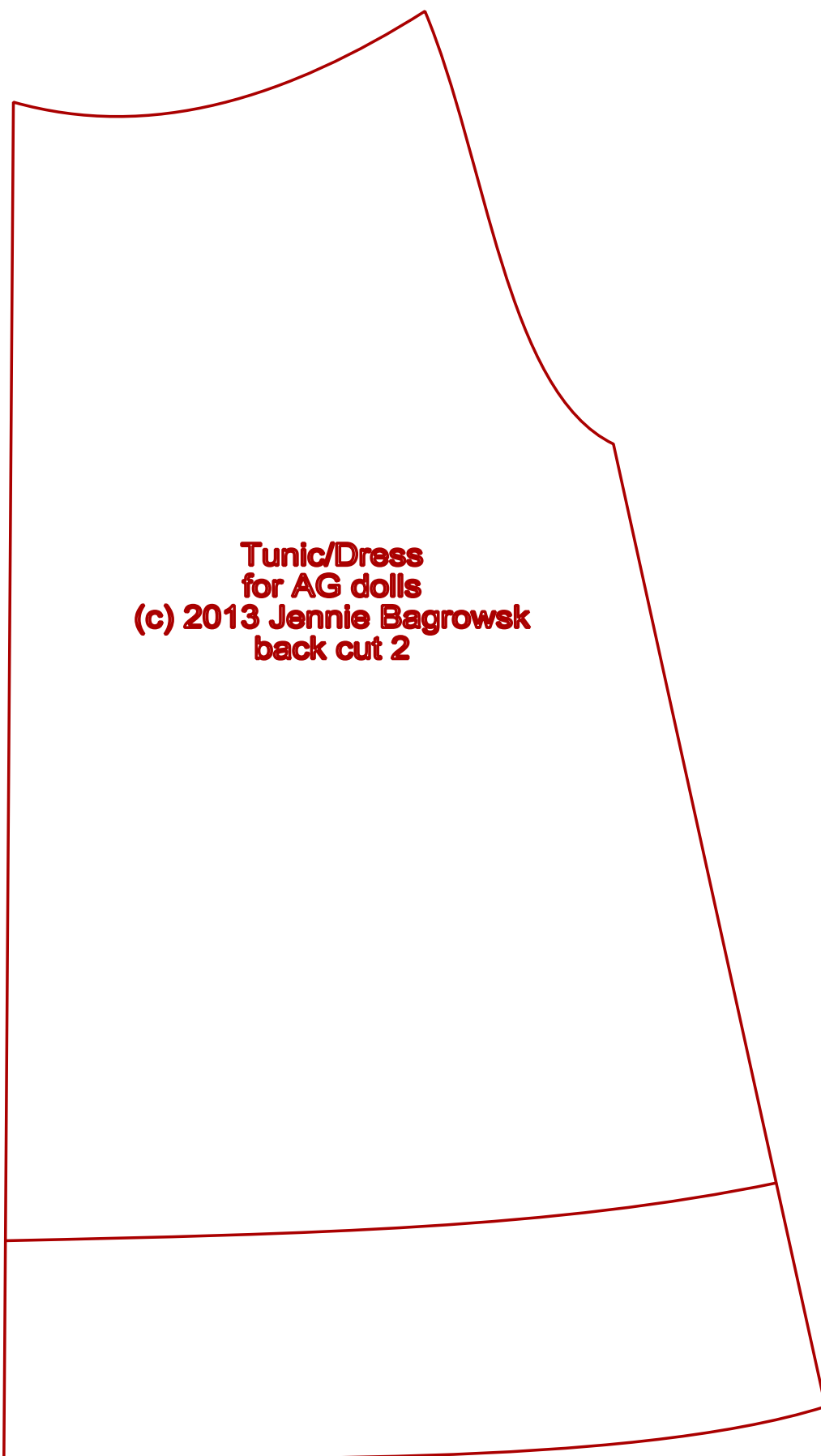
Tie knots on the end and zigzag down to back. Make sure it's secure! Sew side seams.



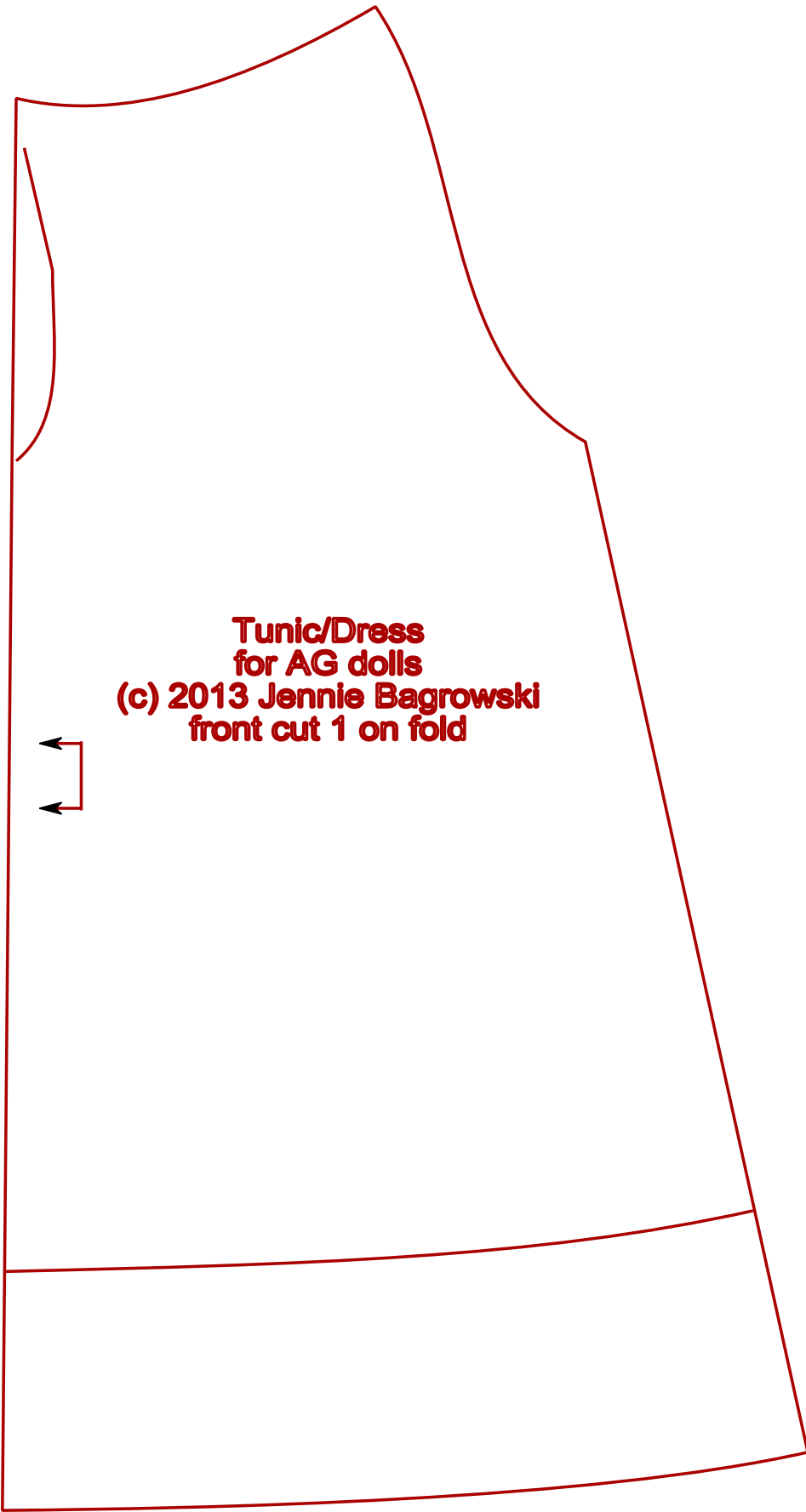
Make 2 tiny buttonholes or eyelets in the center front. Mine were just about 1.5" from the bottom. Cut a 1" piece of bias the width of your shirt and sew it all the way across on the inside, making a casing and covering the buttonholes. Slash open buttonholes and insert drawstring as you did for neckline.

Turn under and hem the back and attach fasteners of choice.



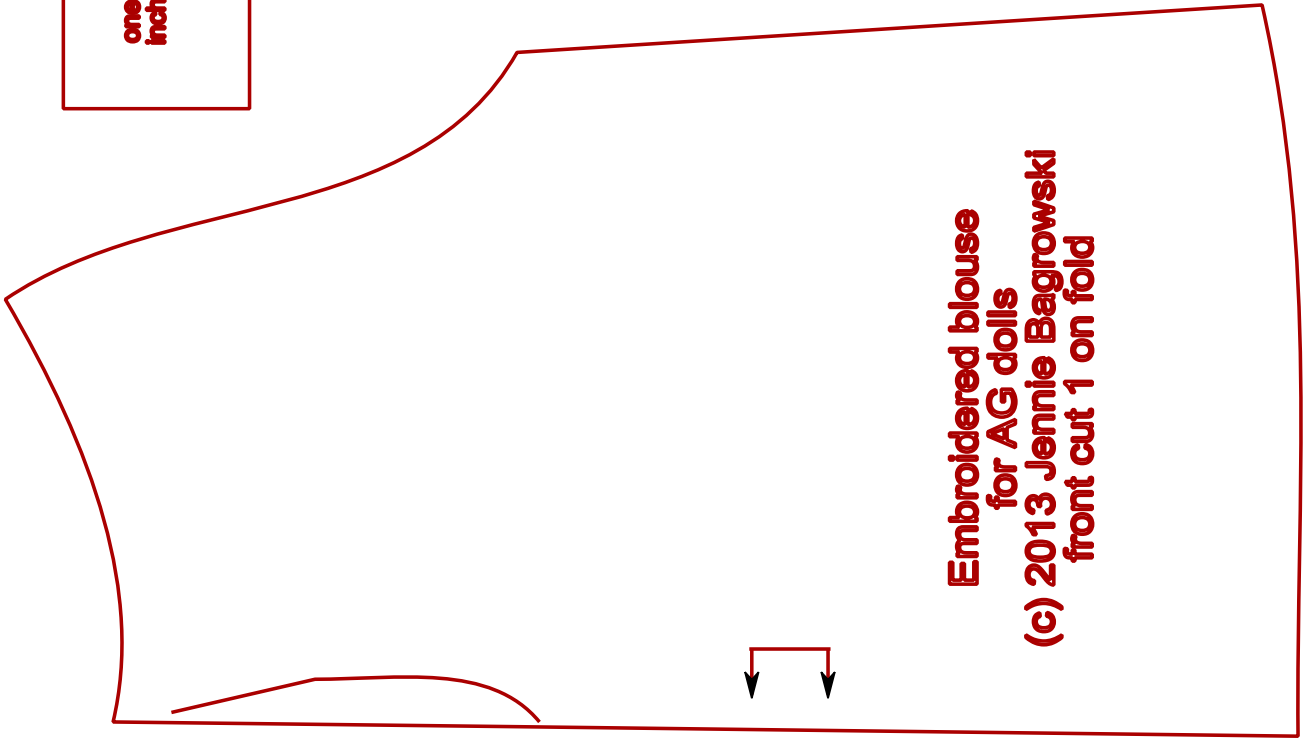
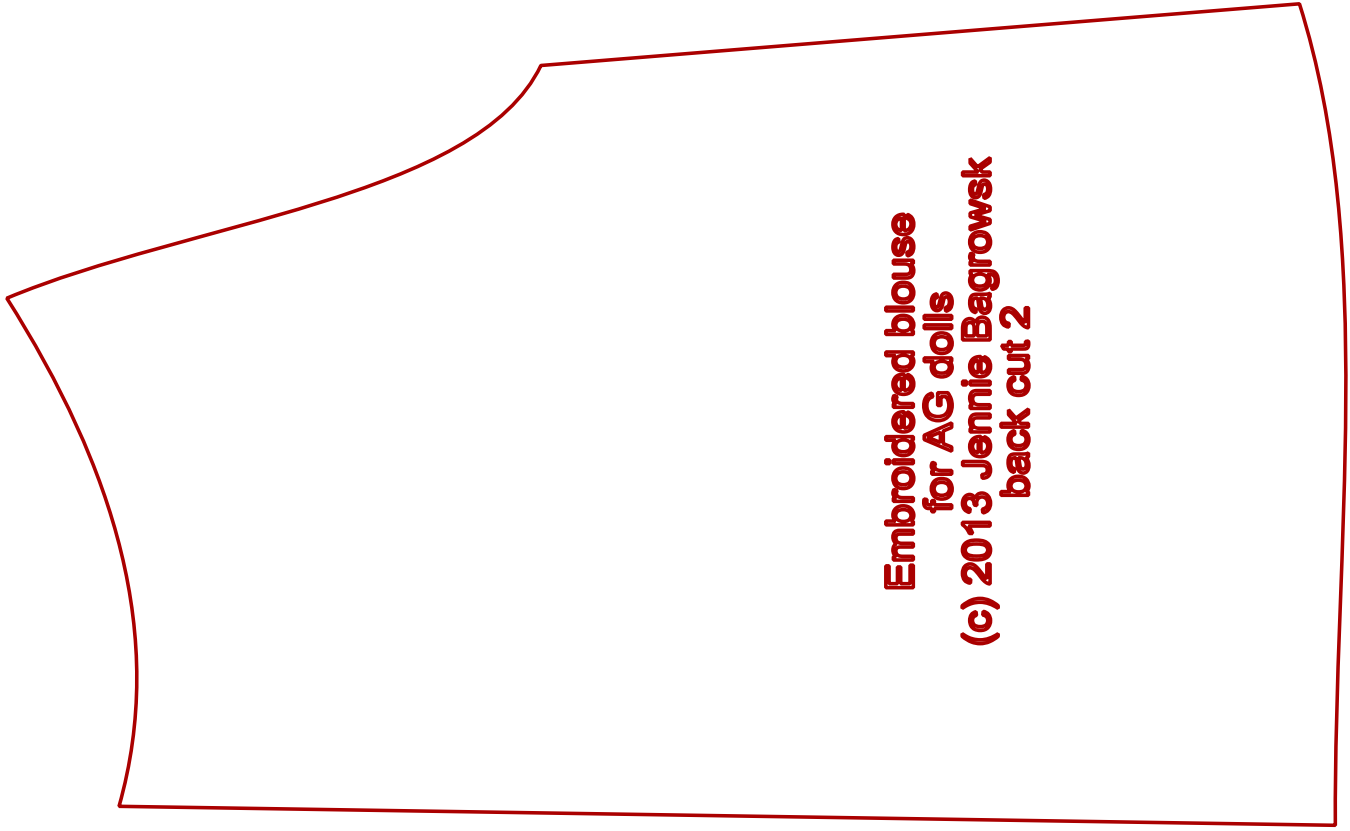


**Tunic/Dress  
for AG dolls  
(c) 2013 Jennie Bagrowsk  
back cut 2**

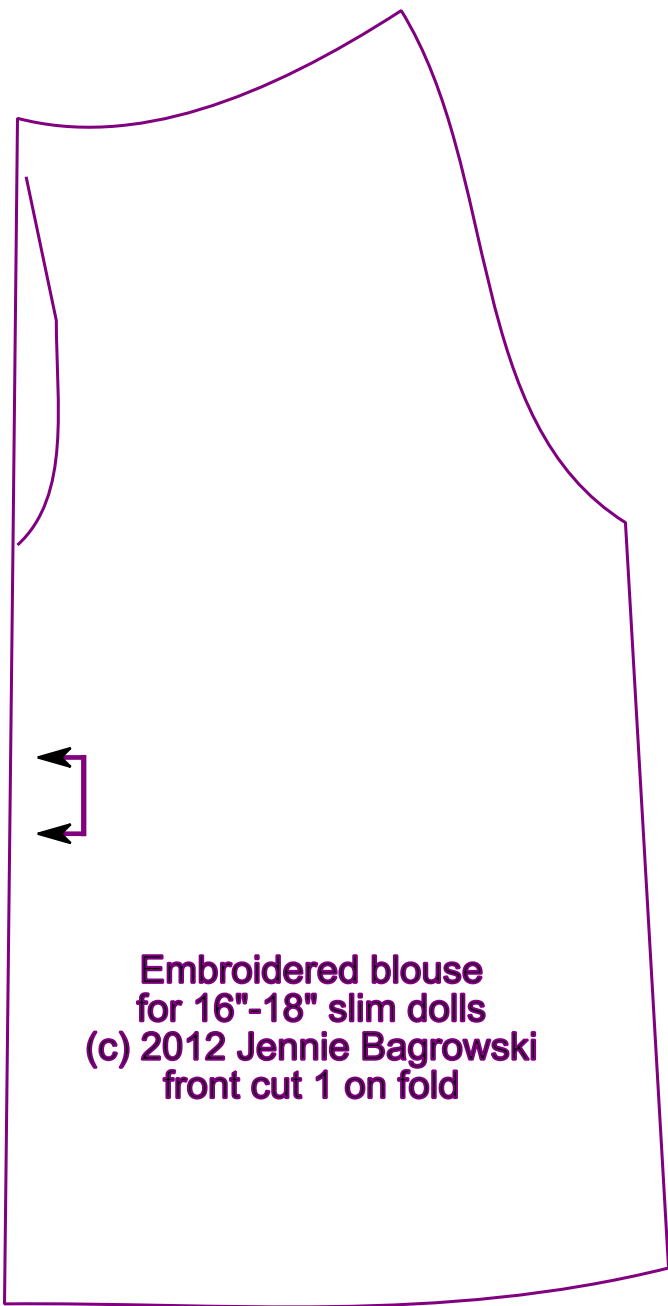


**Tunic/Dress  
for AG dolls  
(c) 2013 Jennie Bagrowski  
front cut 1 on fold**









Use the larger size pieces as a guide to lengthen these into a dress or tunic.



**F**

Embroidered blouse  
for 16"-18" slim dolls  
(c) 2012 Jennie Bagrowski  
sleeve cut 2

**B**



Embroidered blouse  
for 16"-18" slim dolls  
(c) 2012 Jennie Bagrowski  
facing cut 1 on fold

