

Wren ★ Feathers

Fairy Babies Pattern

As always this pattern is © by me (Jennie Bagrowski) and is for your personal use only, you MAY share it by linking to this blog, you may NOT sell it. If you sell things made from this pattern I'd appreciate credit for the pattern design. ☺

I assume you have basic sewing knowledge and the pictures should suffice, but if you need help please email me!

This pattern was drafted to fit Jun Planning's Ai dolls. They are 5" tall with a 3" chest.





These photos show how I made wings for them from a die-cut muslin butterfly. I used Derwent Inktense pencils and acrylic paint varnish instead of water. When it was done I added another layer of varnish. Use a snap to hold onto the fairy's bodice.





Color black spots into the wet varnish



Cut out leaves/petals with scissors or use die cuts or cut up silk flower petals/leaves.



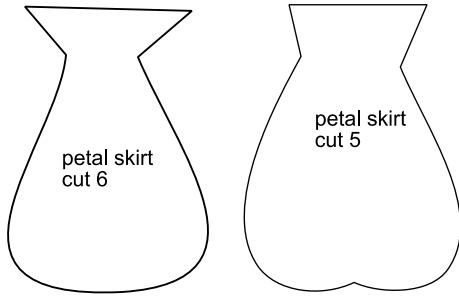
Arrange then iron on interfacing to hold in place while you baste to waistband



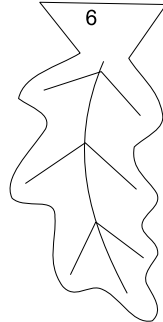
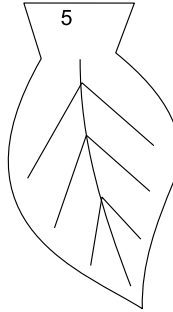
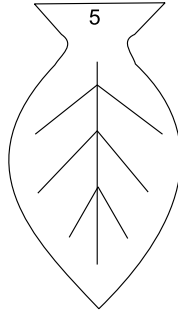
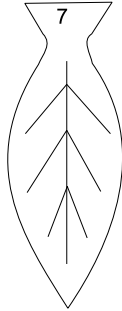
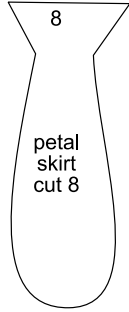
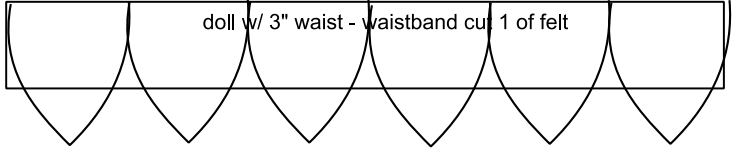
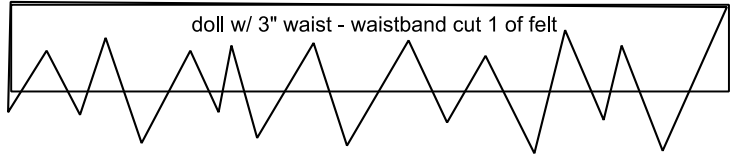
Put on decorations, sew up sides with narrowest seam allowance possible



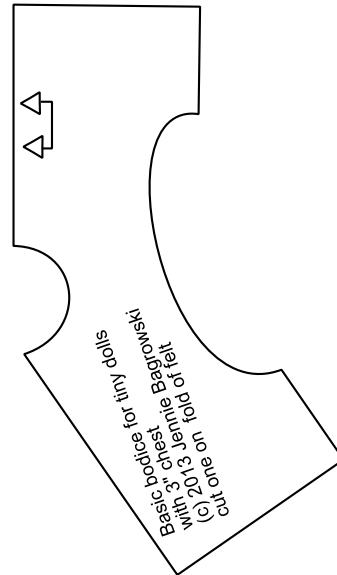
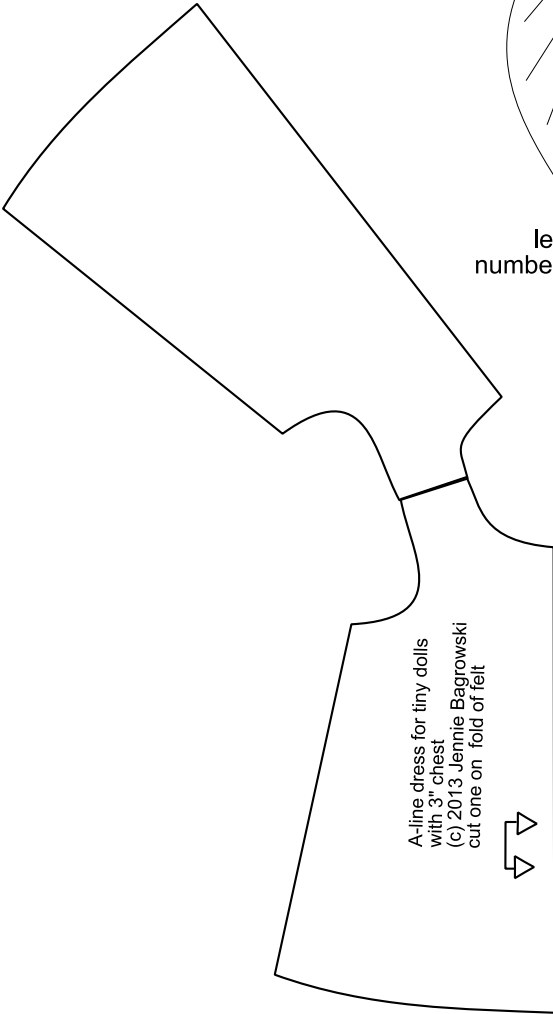
Use a decorative stitch to sew waistband to bodice



doll w/ 3" waist - waistband cut 1 of felt



leaves for leaf skirt cut of felt using number on leaf or mix and match
 number refers to how many you need to fit waistband, you may want more/less
 depending how much you overlap them



Note: there is a VERY narrow seam allowance