

# Wren ★ Feathers

## Mola blouse

As always this pattern is © by me (Jennie Bagrowski) and is for your personal use only, you MAY share it by linking to this blog, you may NOT sell it or upload it to any other site. If you sell things made from this pattern I'd appreciate credit for the pattern design. ☺

If you downloaded this elsewhere it was stolen from: <http://jenwrenne.wordpress.com>. Yep. Stolen.

I assume you have basic sewing knowledge and the explanation should suffice, but if you need help please email me!



Central and South America are bursting with beautiful textile traditions! From the cross stitch and colcha embroidery of Mexico, colorful knitting and crochet of the Andes, intricately dyed and woven plain weave textiles of Guatemala and warp-face pick up weaving of Peru and Bolivia to the reverse-appliqué of Panama, there is some beautiful type of hand word to suit almost everybody in the handwork of South America!

Today, Jasmine is visiting Panama, where traditional clothing of the Kuna Indian women is a blouse with an insert of intricate reverse appliqué known as a mola. It takes many hours of concentration, handstitching and cutting to produce these lovely designs.

A stack of fabric in the necessary colors is basted together with a layer of black on top. For each different color in the motif, the seamstress cuts through the layers to reach the color she wants, and turns under the top color a tiny bit, anchoring all the layers together with tiny, almost invisible stitches.

See the “real thing” here: <http://www.pinterest.com/search/pins/?q=mola>

It is hard to represent the intricacy of this technique at doll-scale. I used machine embroidery to produce my motif, but if you don't have an embroidery machine, there are fabric markers designed to mark on dark fabric which you can use to reproduce all sorts of traditional mola designs. Another option which would probably be the closest thing to authentic is to bond a bunch of colorful fabric scraps to some fusible webbing. Cut out your designs, arrange them on your black fabric, and iron everything down. You could probably do this as reverse appliqué also, cutting out your entire design from black fabric and fusing different colors to the reverse side of it, so they peek through like a real mola.

Ruffle is 2.25” (add hem if not cutting on selvage) by 22” (2.25”x18” for slim dolls)

Sleeve band is 1.5”x width around doll’s hand or upper arm, whichever is bigger. If you don’t have the doll with you, 5” will fit AGs or you can elasticize the bottom instead of making a band.

For 14” dolls the ruffle is 14” x 1.75”+desired hem and sleeve band is 1”x width around doll’s hand

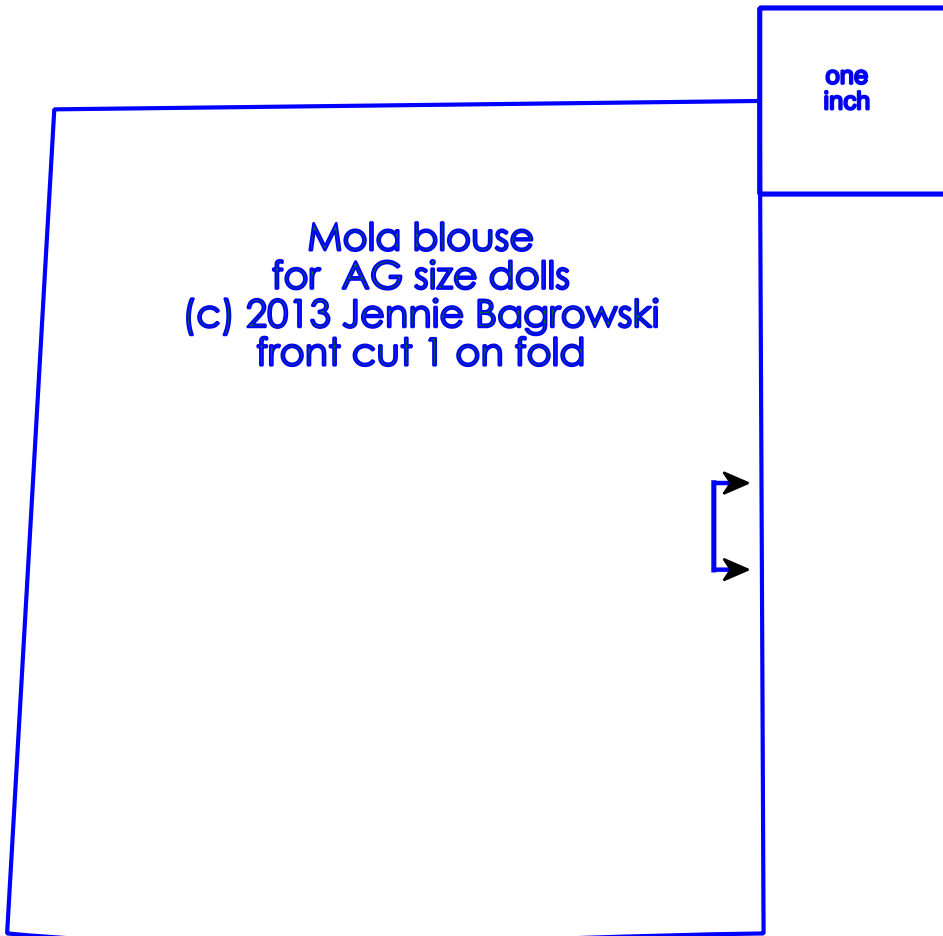
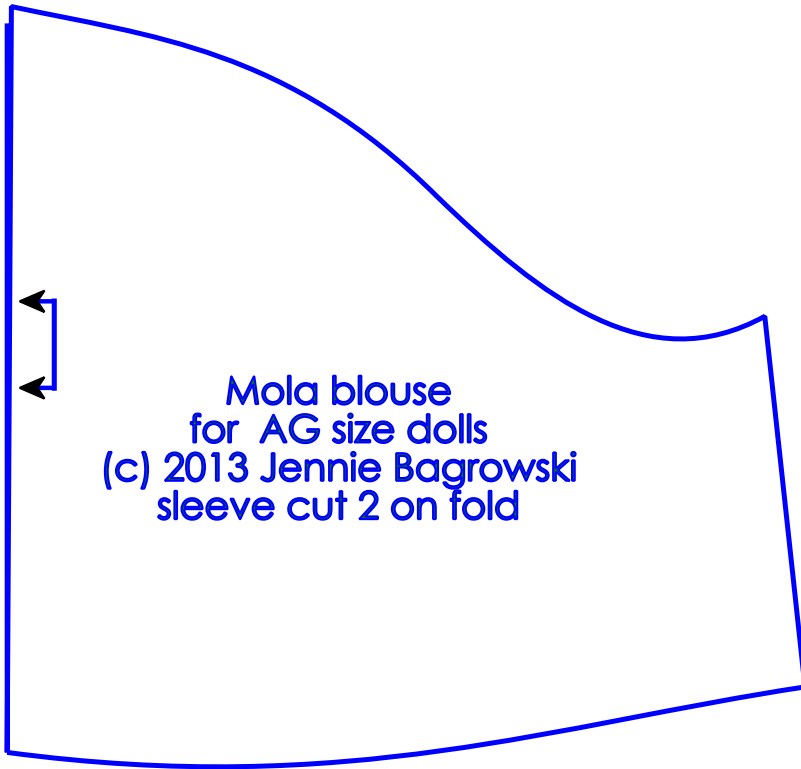


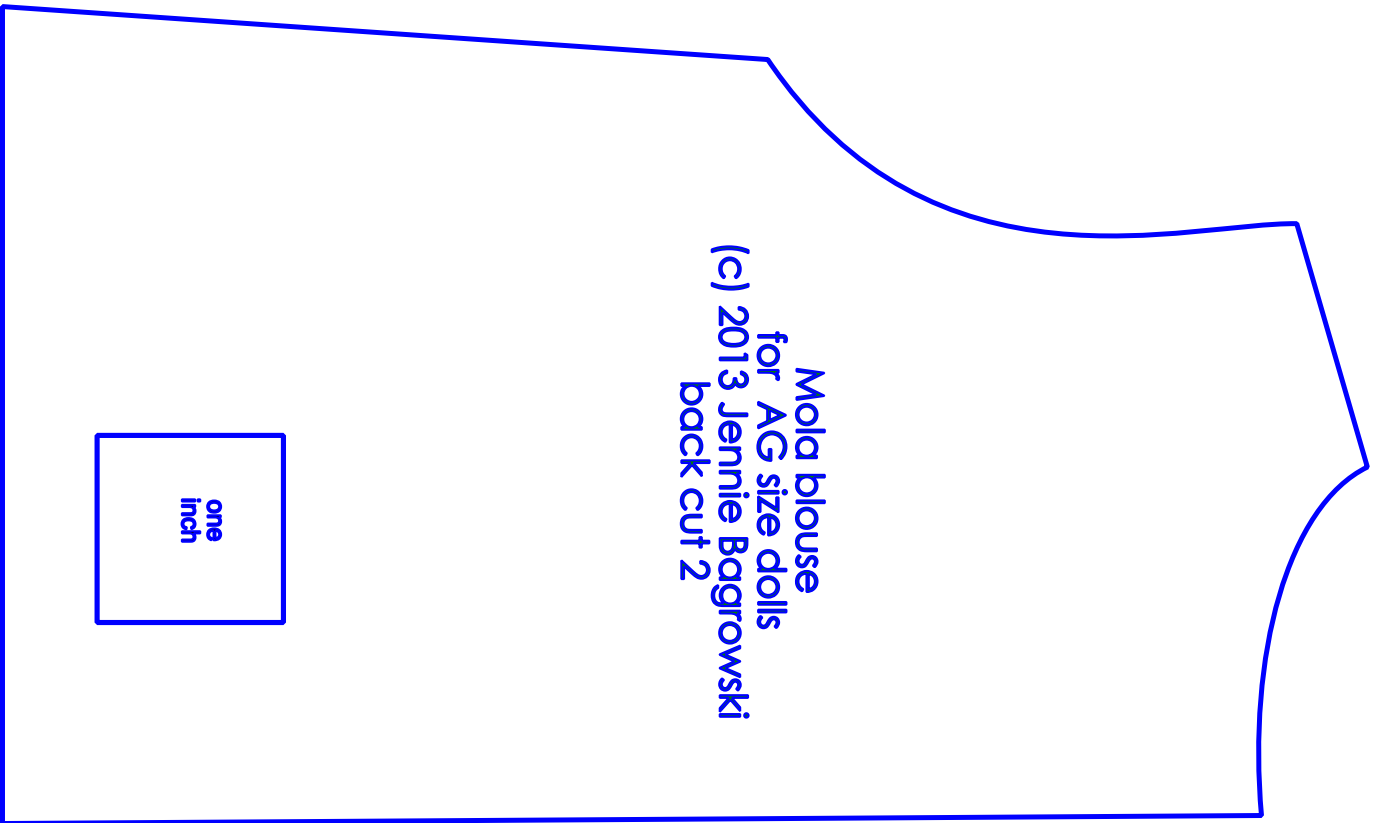
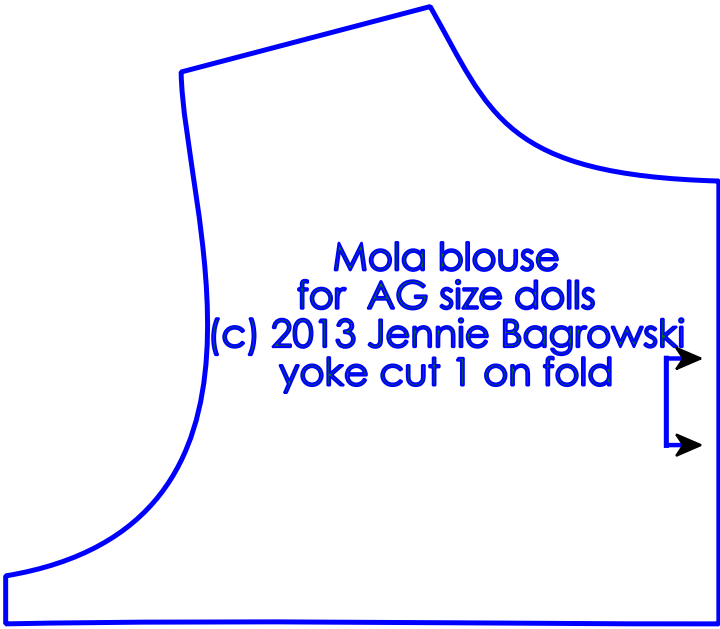
Shoulder pieces are optional. Some blouses have them, some don't. Fold down raw edges of a rectangle of desired size, topstitch rickrack on top and trim to fit neck and arm holes.



Bind neck with bias, add additional rickrack trim as desired. Bottom ruffle is also optional, you can just hem the bottom if you want.

Disclaimer: I have made 3 different AG blouses, and they look and fit great, but have not made final versions of the slim and 14" sizes. I've included the patterns with my standard size modifications and am 99% they will fit as intended. I would really appreciate a picture to share if you make either of those sizes!



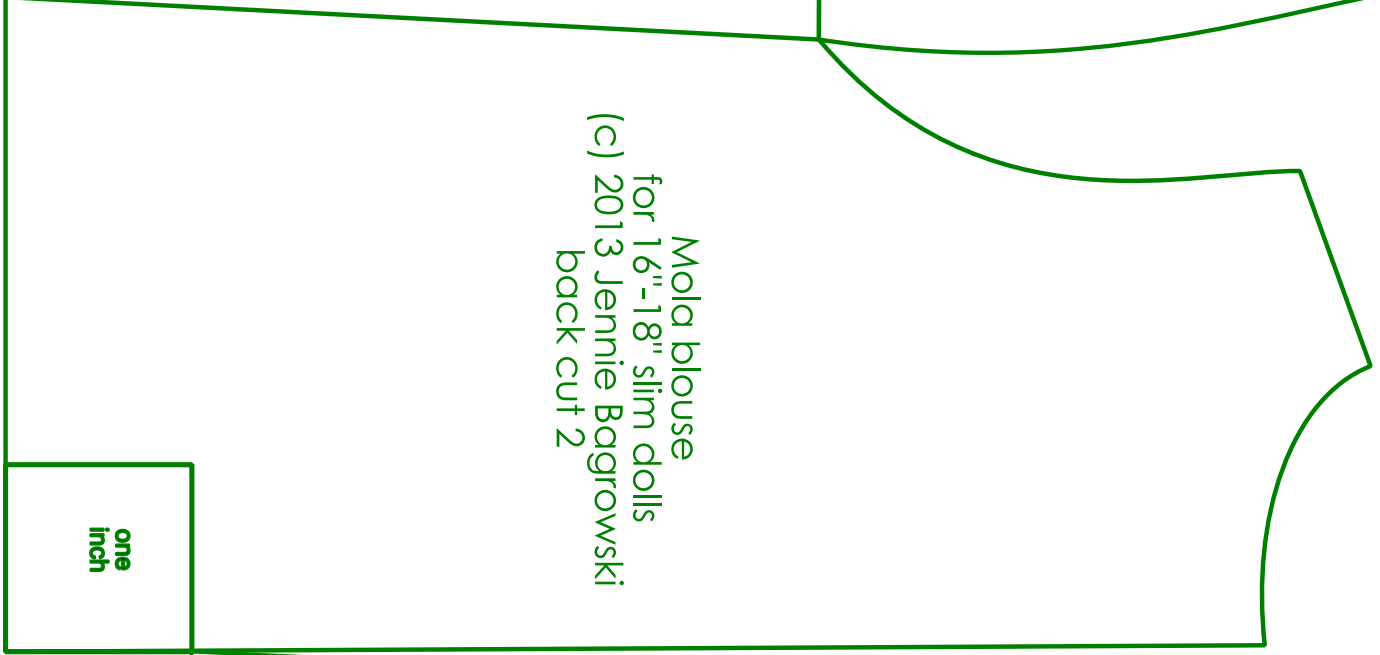




Mola blouse  
for 16"-18" slim dolls  
(c) 2013 Jennie Bagrowski  
yoke cut 1 on fold



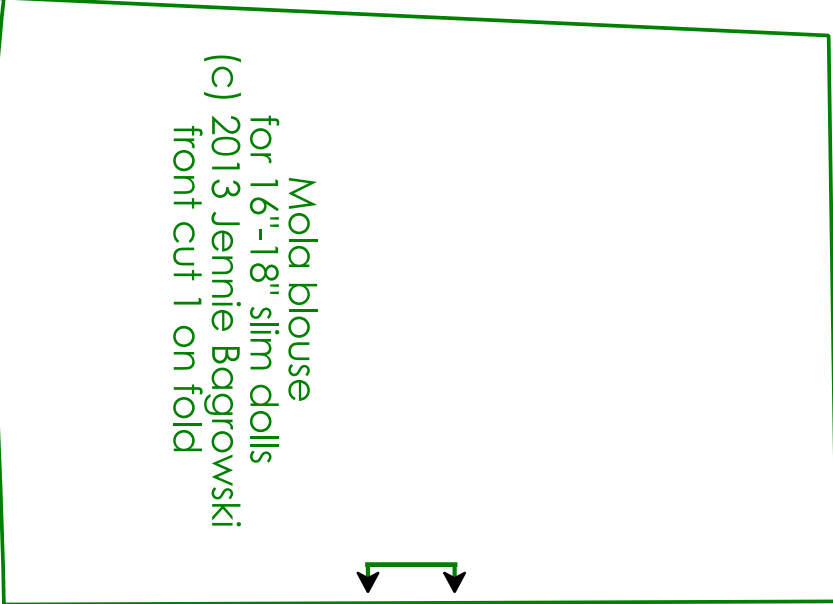
Mola blouse  
for 16"-18" slim dolls  
(c) 2013 Jennie Bagrowski  
sleeve cut 2



Mola blouse  
for 16"-18" slim dolls  
(c) 2013 Jennie Bagrowski  
back cut 2



one  
inch



Mola blouse  
for 16"-18" slim dolls  
(c) 2013 Jennie Bagrowski  
front cut 1 on fold

