

Wren ★ Feathers

Historical Series: Early 1960s

Chatty's smock dress

As always this pattern is © by me (Jennie Bagrowski) and is for your personal use only, you MAY share it by linking to this blog, you may NOT sell it. If you sell things made from this pattern I'd appreciate credit for the pattern design. If you downloaded this elsewhere it was stolen from: <https://jenwrenne.wordpress.com/>

I assume you have basic sewing knowledge and the pictures should suffice, but if you need help please email me!



The pattern for this uniquely cut dress is very similar to some vintage patterns I've seen from the late 1920s-early30s. Those had straight sleeves and slightly different yokes, but this is close enough that you could shorten the sleeves and skirt of this and make it in a repro feedsack fabric. The style at that time was to wear it as a play dress with puffy bloomers underneath.



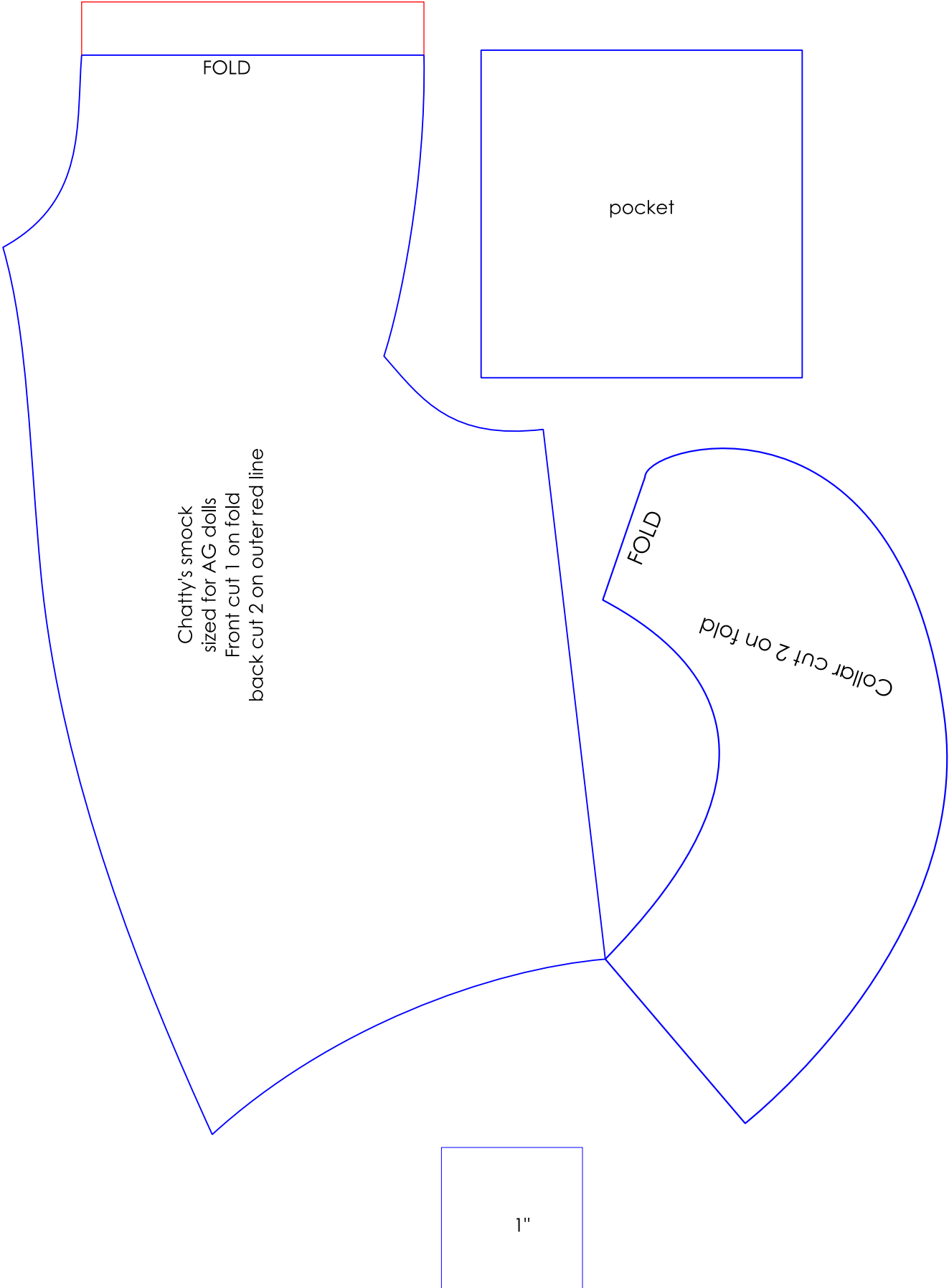
This one was included in a pattern McCall made. I bought the pattern on ebay mainly for this dress and found to my dismay that even though the seller claimed all the pieces were there, they actually weren't and this dress was not included. ☹️ So this is my version of the dress based on the blouse; it seems reasonably accurate and fits well. The original had elastic in the wrists and there is length included for that. If you prefer, gather to cuffs. The original fell about mid-forearm, so for a more traditional look than mine, shorten the sleeves if adding cuffs. You'll see on mine that the collar has a weird notch in the middle, but doesn't quite look like two separate pieces. I used the original pattern and the piece you'll find for the collar here is my slightly tweaked version to look more like the drawing above.



The construction is fairly straightforward once you grasp (as I at first did not) how the stars of the skirt and sleeve line up. Make collar, face neck, finish sleeve edges, gather and attach skirt, sew side seams, hem, attach closures to close flush in back.

I was guessing at the skirt length and mine might be a little too long to be trendy for the 60s, so make a generous hem or trim to desired length and make a narrow hem.





Chatty's smock
sized for AG dolls
Front cut 1 on fold
back cut 2 on outer red line

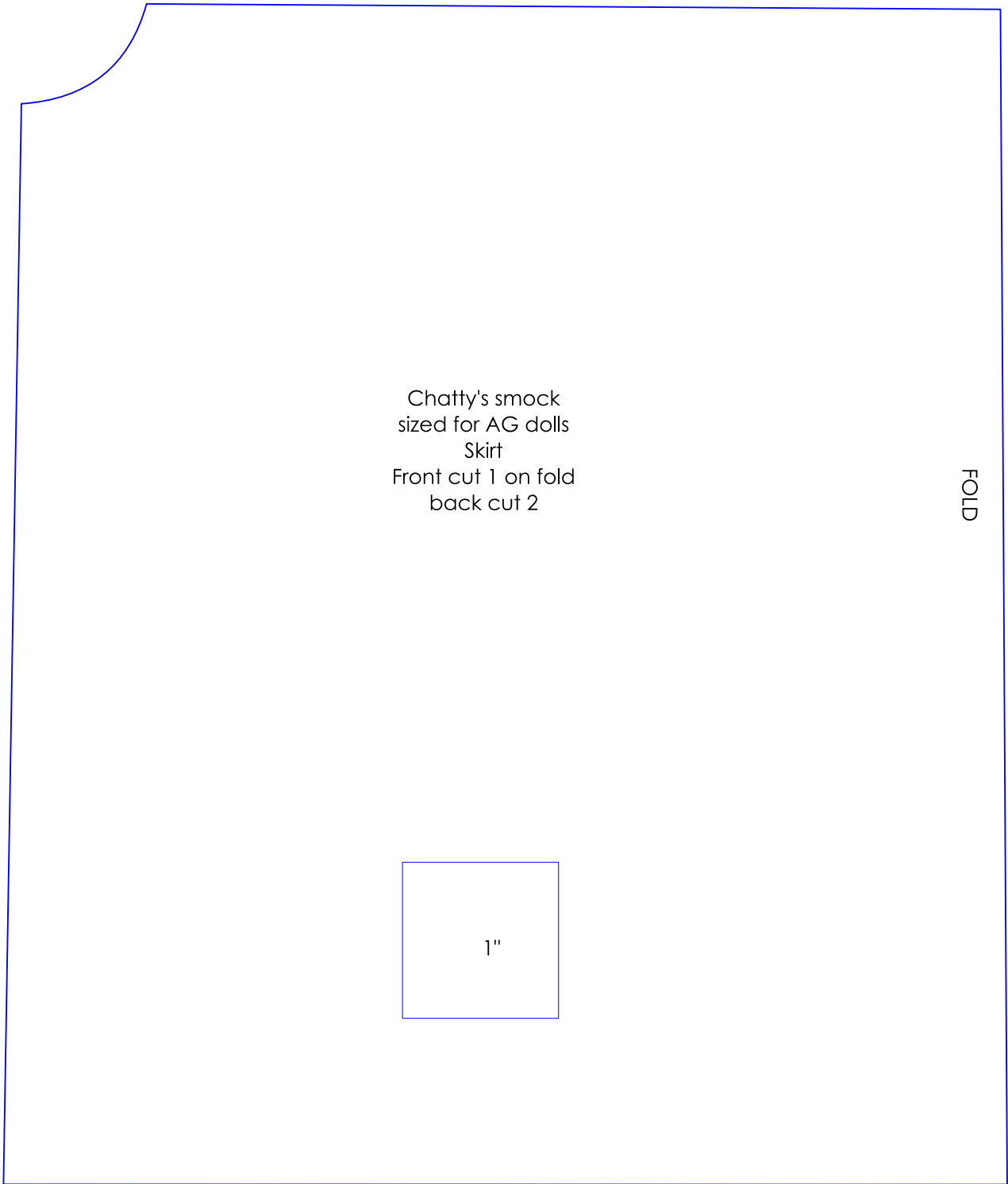
FOLD

pocket

FOLD

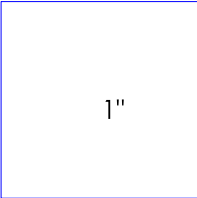
Collar cut 2 on fold

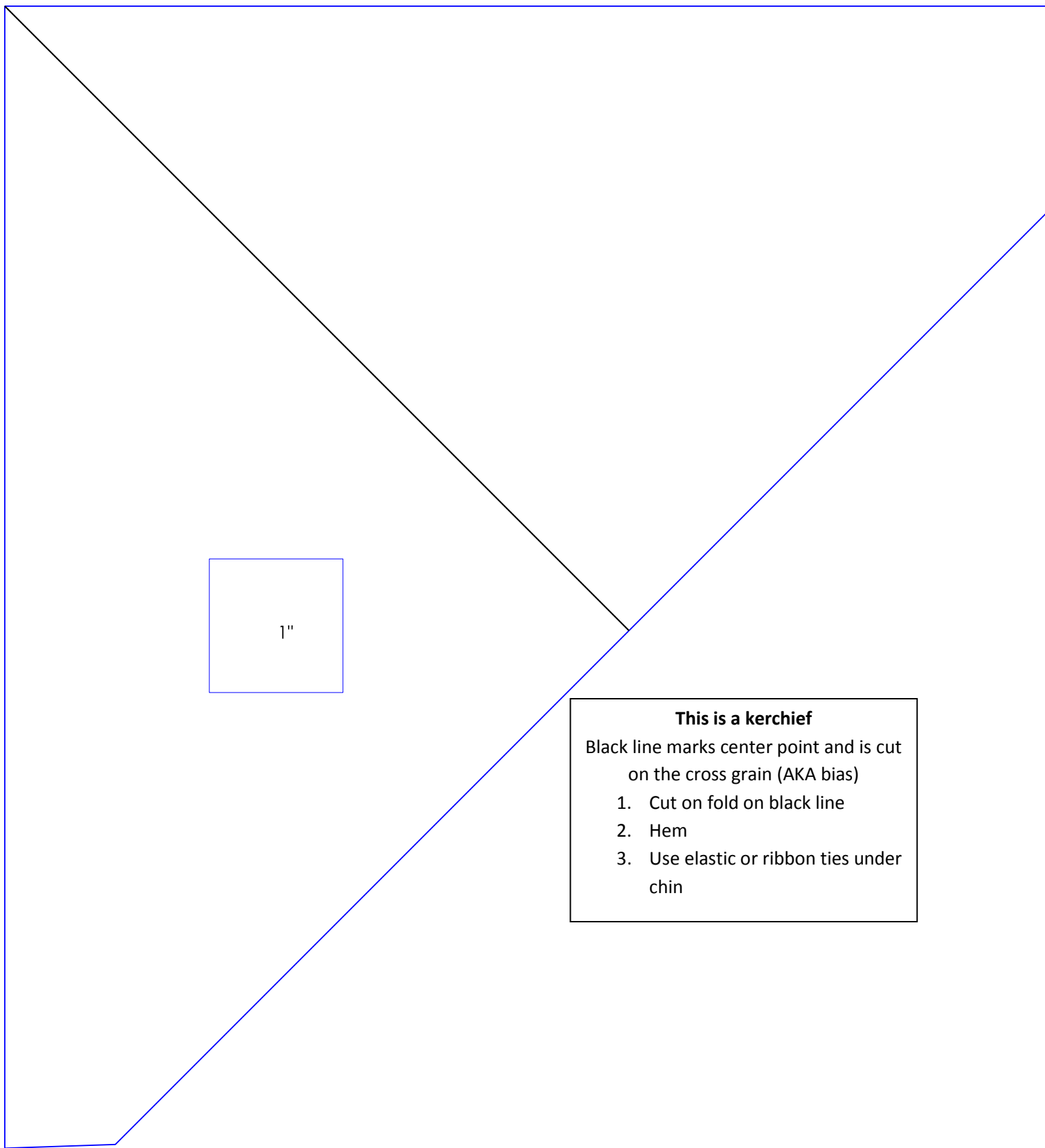
1"



Chatty's smock
sized for AG dolls
Skirt
Front cut 1 on fold
back cut 2

FOLD





This is a kerchief
Black line marks center point and is cut on the cross grain (AKA bias)

1. Cut on fold on black line
2. Hem
3. Use elastic or ribbon ties under chin