

Wren ★ Feathers

Mid-Century Gym Suit

As always this pattern is © by me (Jennie Bagrowski) and is for your personal use only, you MAY share it by linking to this blog, you may NOT sell it or upload it to any site without my permission. If you sell things made from this pattern I'd appreciate credit for the pattern design. ☺

If you downloaded this elsewhere it was stolen from: <http://jenwrenne.wordpress.com>

Quarter inch seams allowed on all pieces unless otherwise specified.

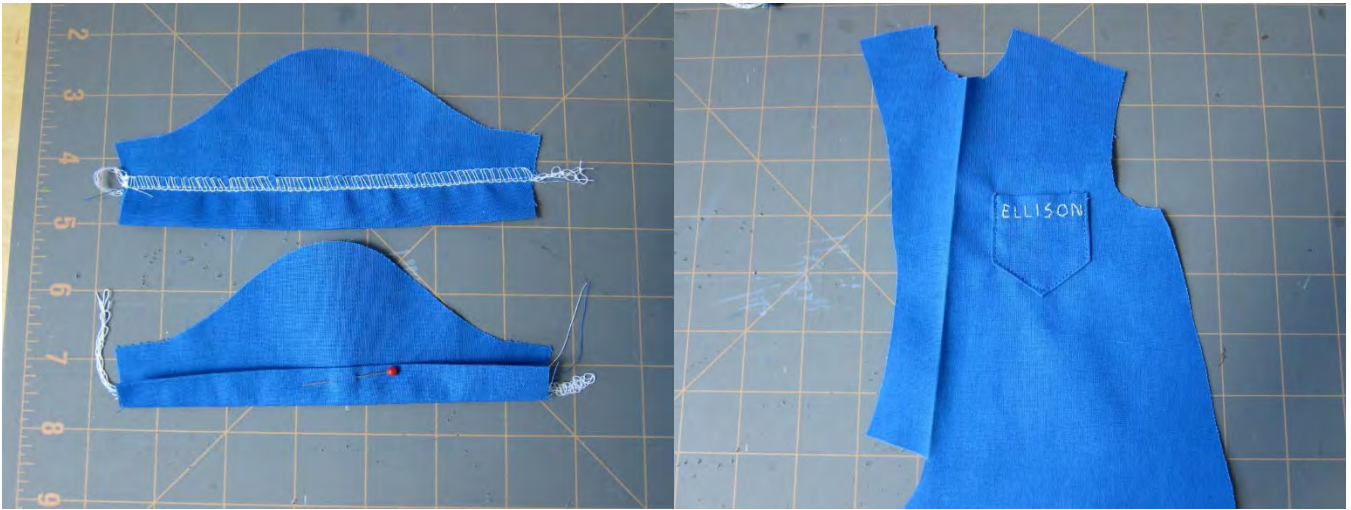
I assume you have basic sewing knowledge and the explanation should suffice, but if you need help please email me!

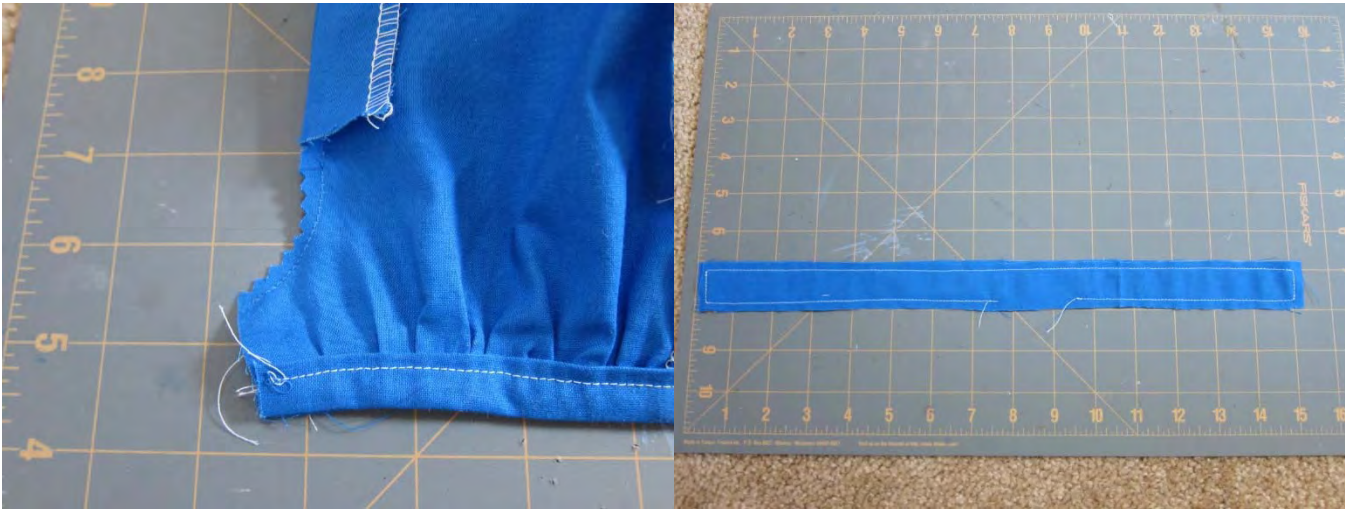


Melody says, "Get outside and get moving!"





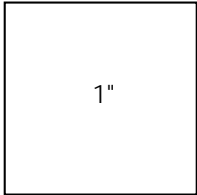




Match pieces before cutting

1/2" allowed for elastic casing. Remove if using leg band

Wren★Feathers
Mid-Century Gym Suit for 18" dolls
(c) 2016 Jennie Bagrowski
Front cut 2



Gym suit front match before cutting

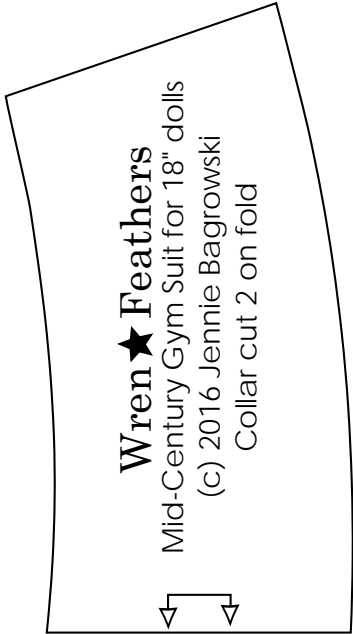
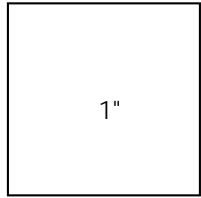
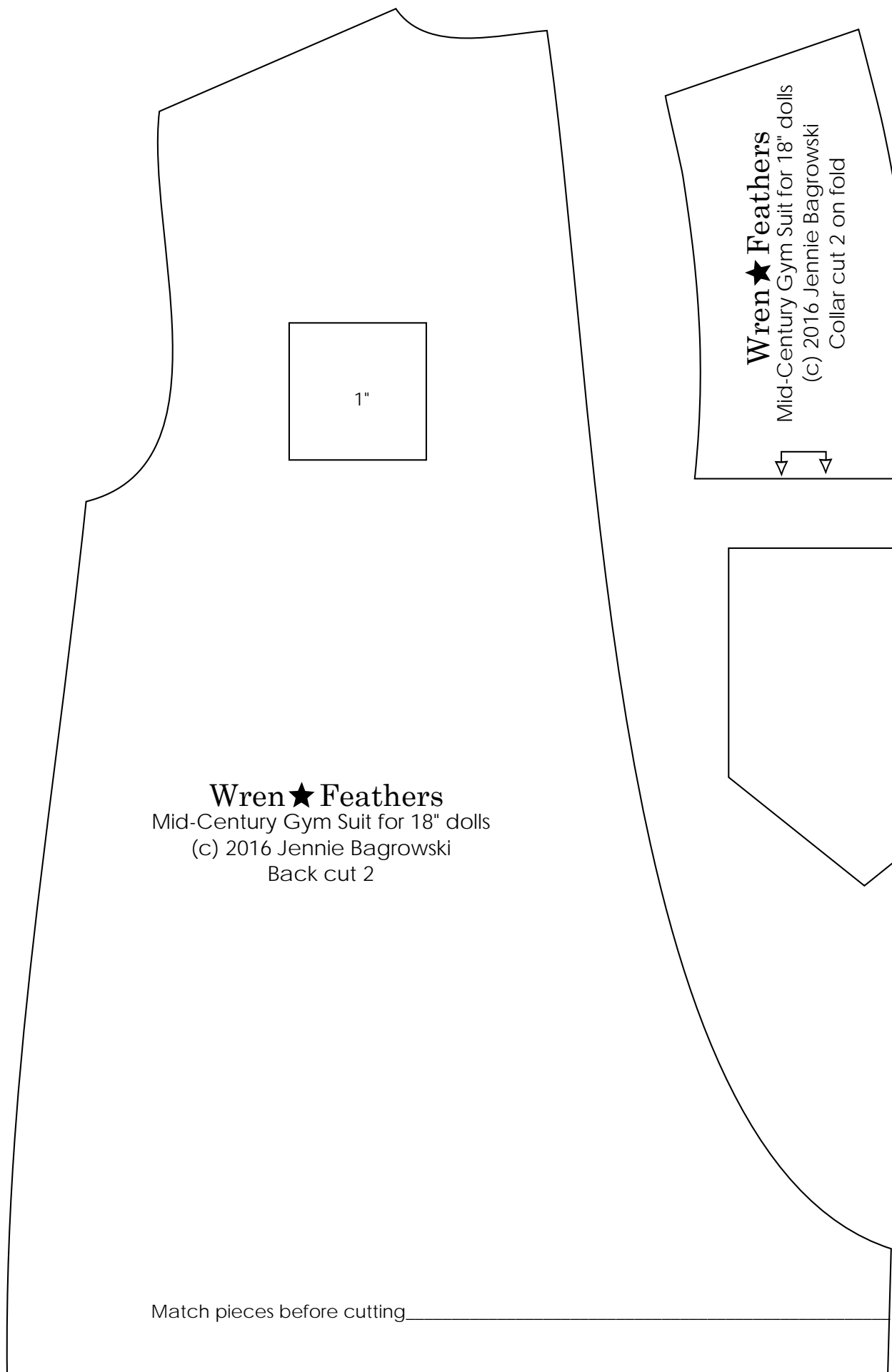
Gym suit front match before cutting

1/2" allowed for elastic casing. Remove if using leg band

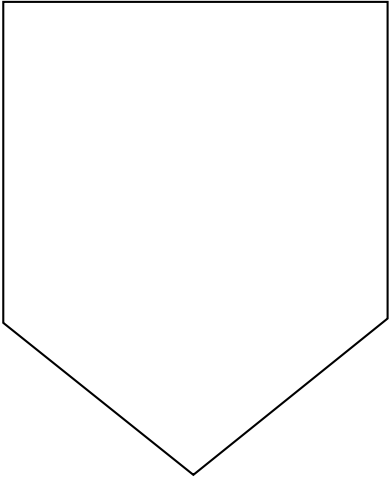
Wren★Feathers
Mid-Century Gym Suit for 18" dolls
(c) 2016 Jennie Bagrowski
Optional leg band cut 2

Wren★Feathers
Mid-Century Gym Suit for 18" dolls
(c) 2016 Jennie Bagrowski
Sleeve cut 2 on fold

1"



Wren★Feathers
Mid-Century Gym Suit for 18" dolls
(c) 2016 Jennie Bagrowski
Collar cut 2 on fold



Wren★Feathers
Mid-Century Gym Suit for 18" dolls
(c) 2016 Jennie Bagrowski
Back cut 2

Match pieces before cutting