

# Wren ★ Feathers

## BHM Week 3: 1960s Coat

As always this pattern is © by me (Jennie Bagrowski) and is for your personal use only, you MAY share it by linking to this blog, you may NOT sell it or upload it to any site without my permission. If you sell things made from this pattern I'd appreciate credit for the pattern design. ☺

If you downloaded this elsewhere it was stolen from: <http://jenwrenne.wordpress.com>

**Quarter inch seams allowed on all pieces unless otherwise specified.**

I assume you have basic sewing knowledge and the explanation should suffice, but if you need help please email me!





Notes:

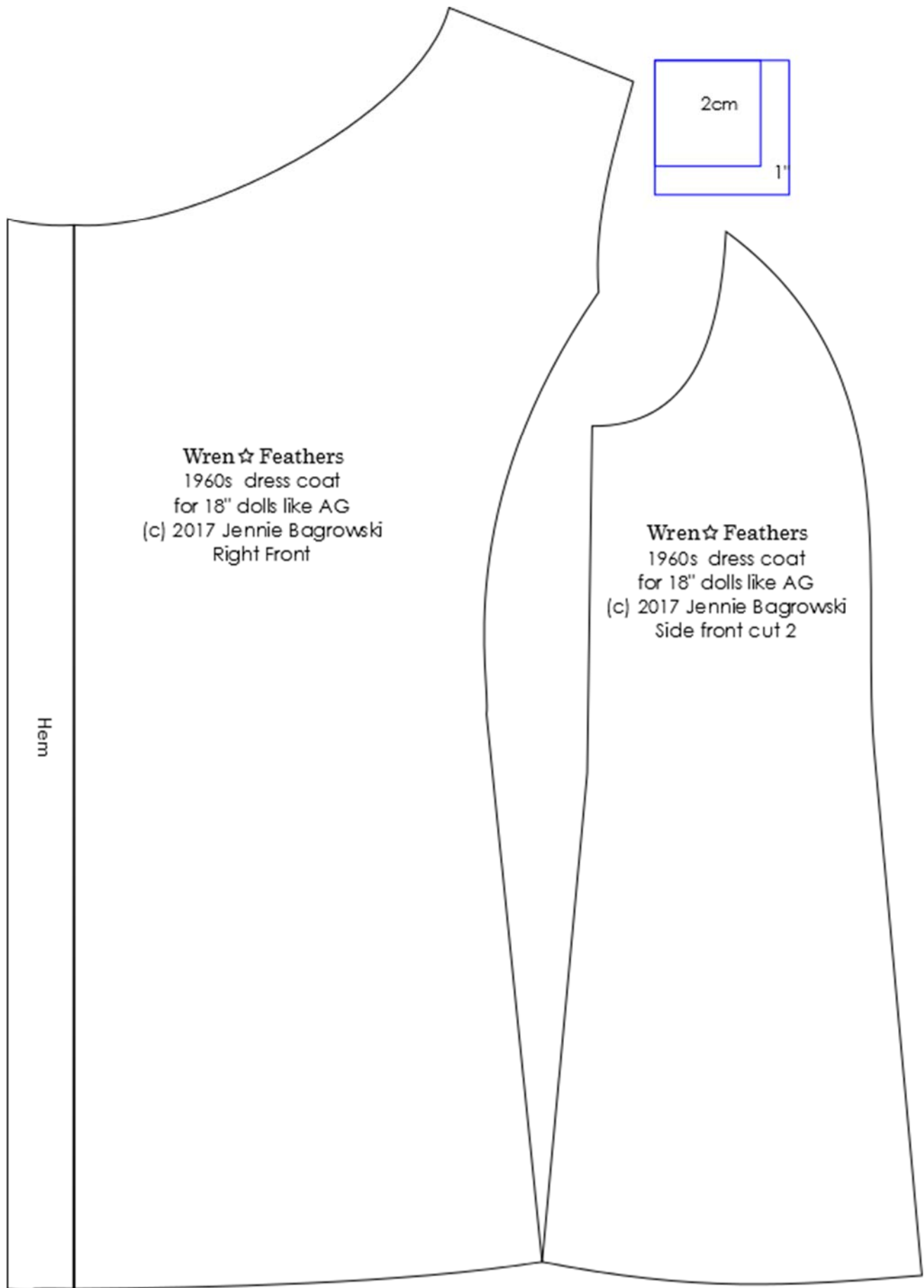
- Use medium-weight flannel to have a look of thick, warm, wool at doll scale
- Use the softest, thinnest fake fur you can find or substitute fluffy fleece. You can omit fur at the cuffs and hem if preferred, but it's needed at the neck to fit properly.
- If your doll is wearing it over something else, sleeveless or short, tight sleeves are recommended.

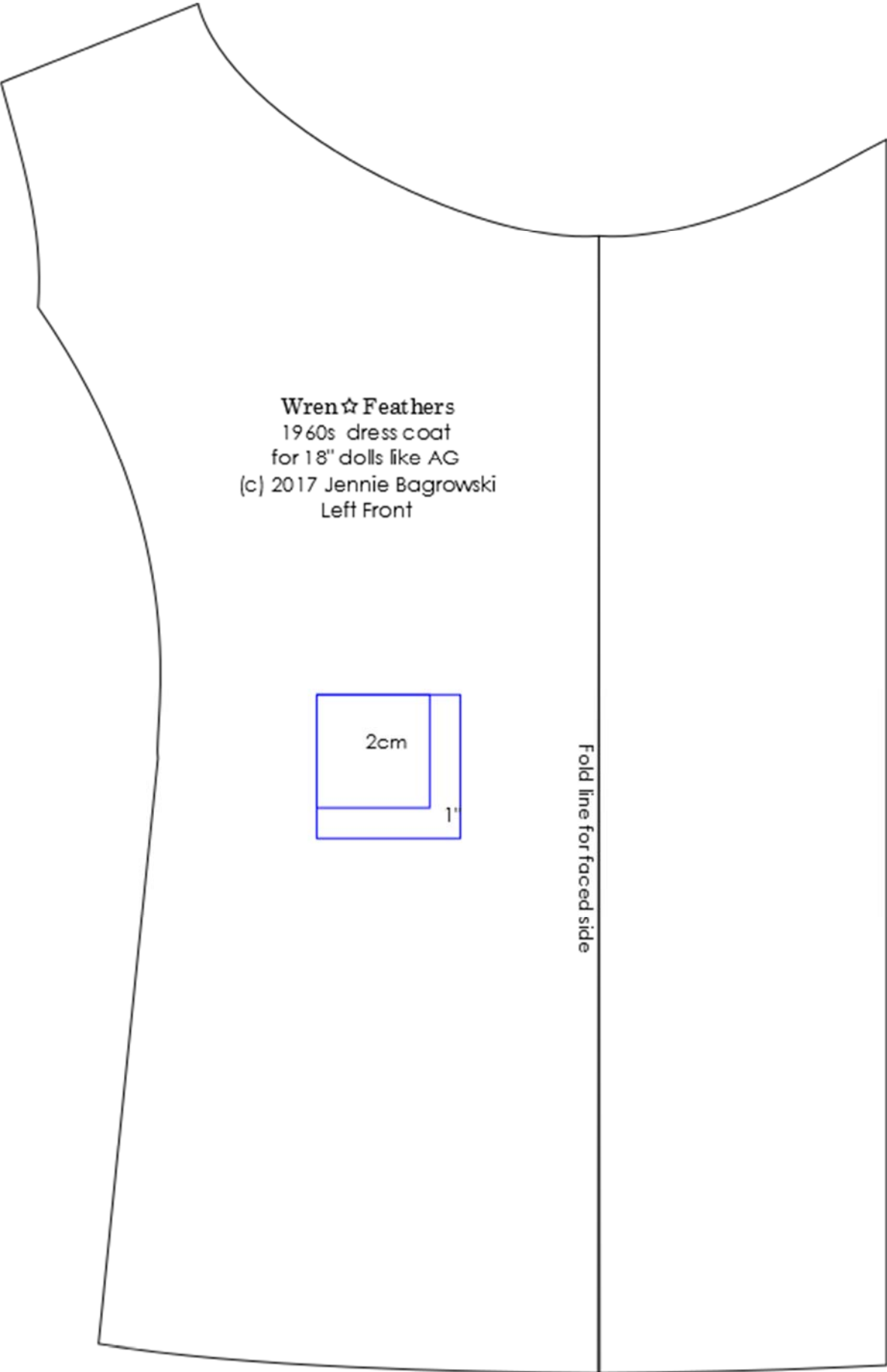




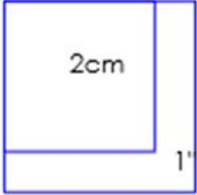
I looked at some actual patterns from the period, and drafted a sleeve that is slightly curved at the back, just like those. You'll need to gather and ease the curved edge slightly when sewing that seam. It makes for a marginally nicer fit on a doll with slightly curved arms like an AG.







**Wren ☆ Feathers**  
1960s dress coat  
for 18" dolls like AG  
(c) 2017 Jennie Bagrowski  
Left Front



Fold line for faced side

