

Wren ★ Feathers

1950s Outfit for 14" dolls

As always this pattern is © by me (Jennie Bagrowski) and is for your personal use only, you MAY share it by linking to this blog, you may NOT sell it or upload it to any site without my permission. If you sell things made from this pattern I'd appreciate credit for the pattern design. ☺

If you downloaded this elsewhere it was stolen from: <http://jenwrenne.wordpress.com>

Quarter inch seams allowed on all pieces unless otherwise specified.

I assume you have basic sewing knowledge and the explanation should suffice, but if you need help please email me!

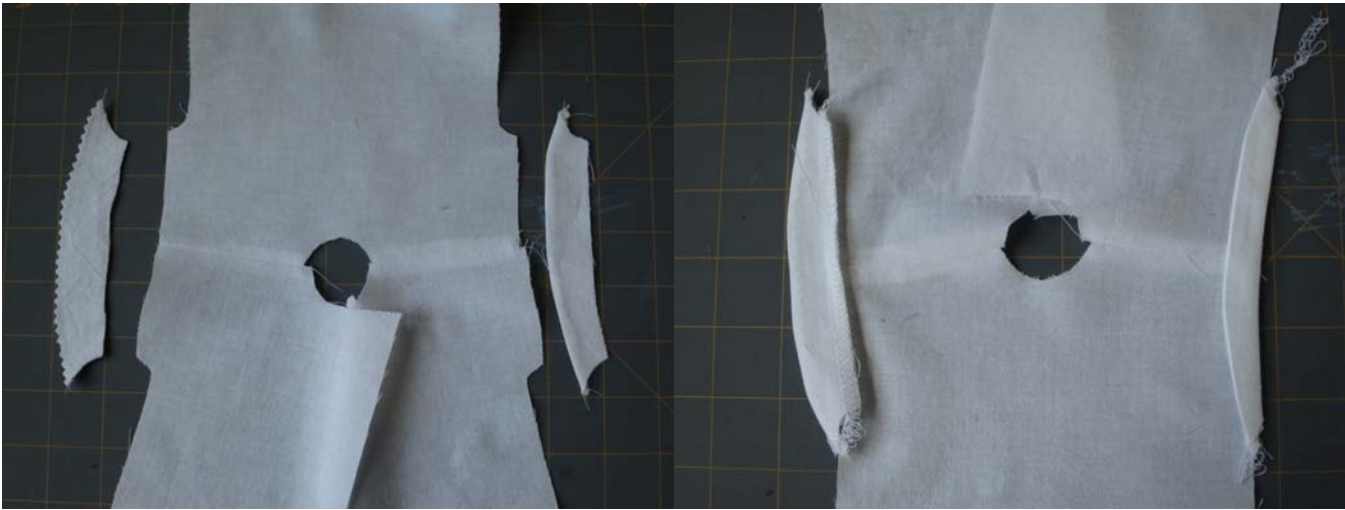


This outfit will fit dolls about 14" tall with about a 7" chest like Toni or Wellie Wishers.



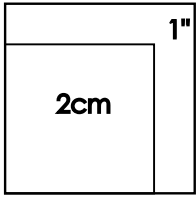
I love the slightly vintage look of this outfit on a modern doll!

Share pix of your creations on vintage or modern dolls here: <https://www.flickr.com/groups/2825314@N20/>





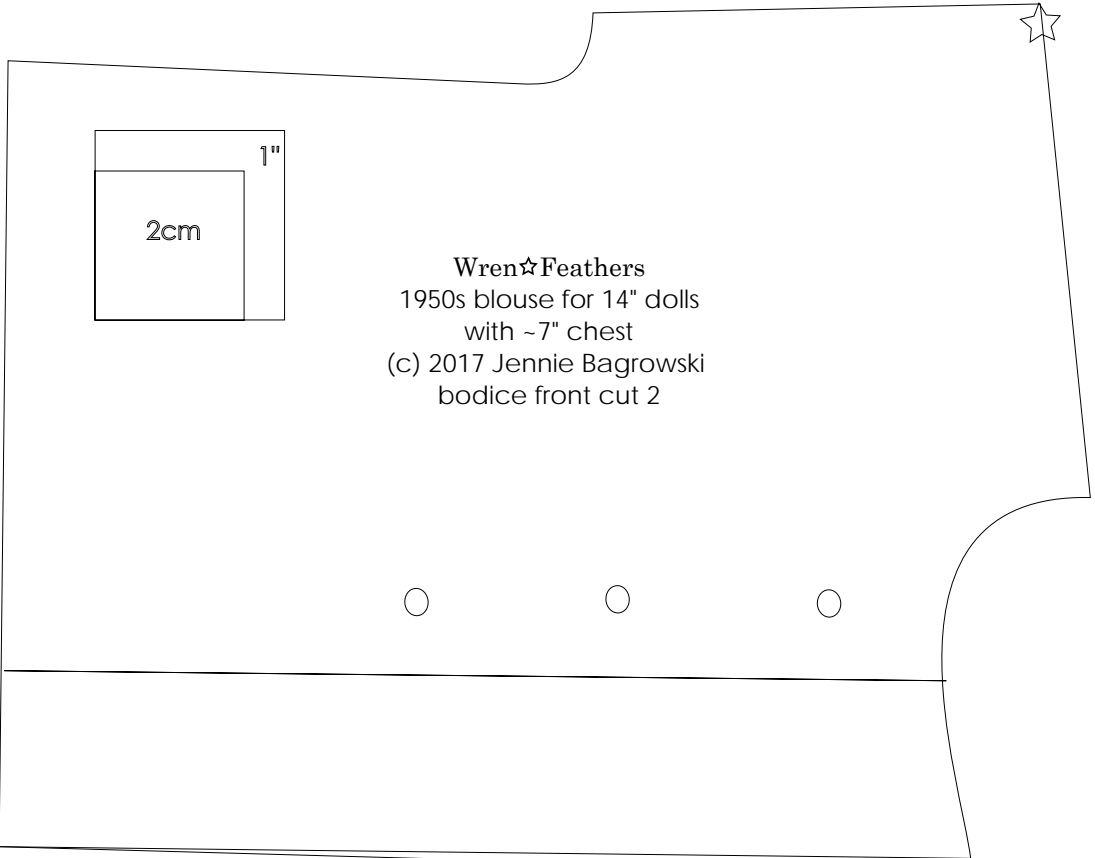
The fit of these pants is a little odd, but I kept the vintage lines of the original. I found them baggy at the waist in a strange way on Toni, but the fit on the Wellies is great! Using a drawstring rather than elastic means they'll never stretch out and get ruined when the elastic "dies".



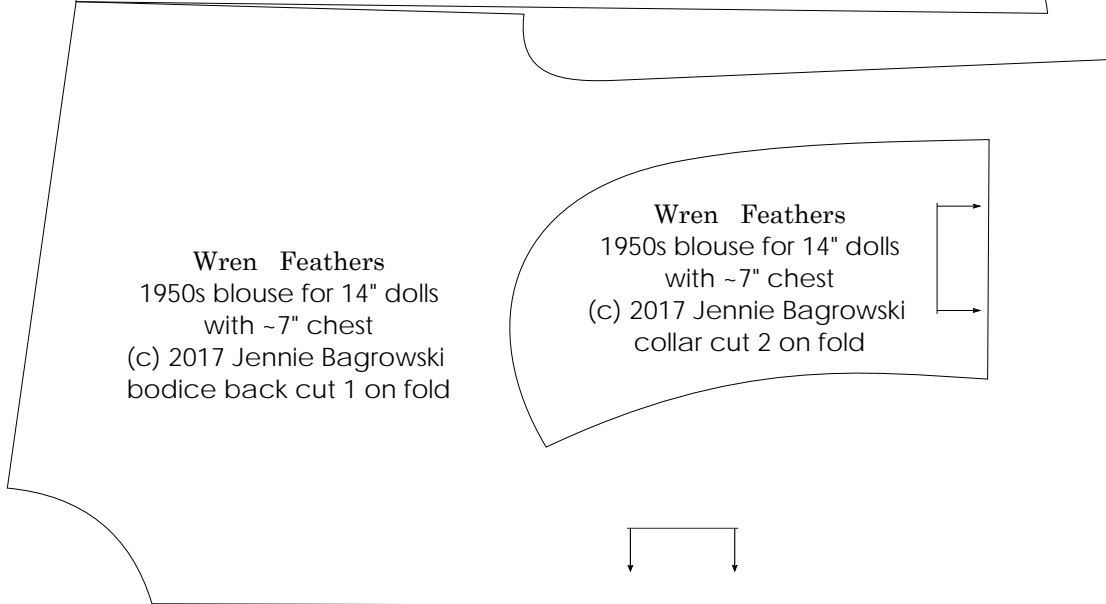
front

Pants for Toni or Wellie Wishers
based on Butterick 7973

This piece cuts off - extend bottom 1" below this line!

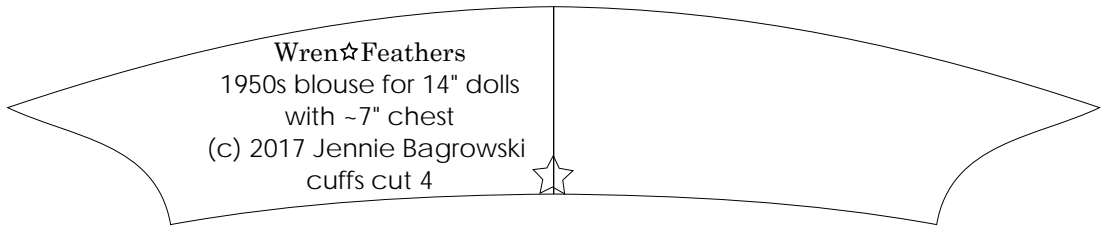


Wren☆Feathers
1950s blouse for 14" dolls
with ~7" chest
(c) 2017 Jennie Bagrowski
bodice front cut 2



Wren Feathers
1950s blouse for 14" dolls
with ~7" chest
(c) 2017 Jennie Bagrowski
bodice back cut 1 on fold

Wren Feathers
1950s blouse for 14" dolls
with ~7" chest
(c) 2017 Jennie Bagrowski
collar cut 2 on fold



Wren☆Feathers
1950s blouse for 14" dolls
with ~7" chest
(c) 2017 Jennie Bagrowski
cuffs cut 4